

WATCH

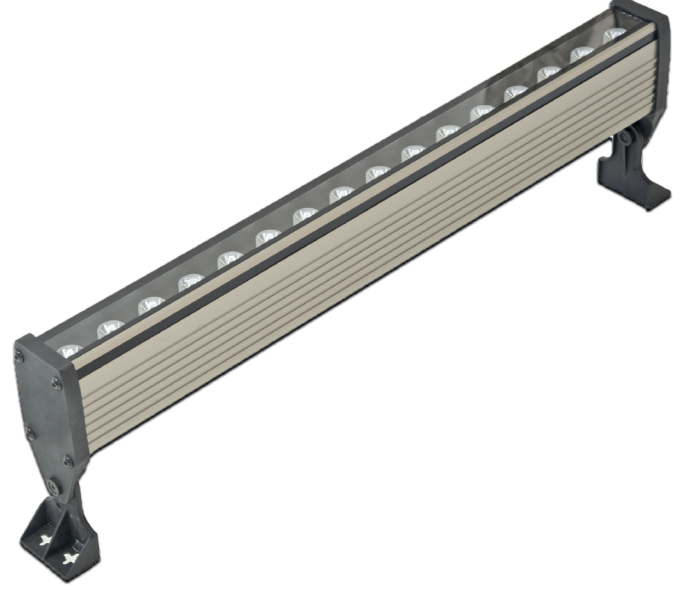
Technical Specifications | Teknik Özellikler

| | |
|---------------|-----------------------|
| Body | : Aluminium |
| Lens | : PMMA |
| Light Source | : High Power LED |
| CRI | : Ra>80 |
| Input Voltage | : 220-240V AC 50/60Hz |
| Body Color | : Mat Grey |
| Usage | : Ground |
| IP | : IP68 |

| | |
|----------------|-----------------------|
| Gövde | : Alüminyum |
| Lens | : PMMA |
| Isık Kaynagı | : High Power LED |
| CRI | : Ra>80 |
| Giris Gerilimi | : 220-240V AC 50/60Hz |
| Gövde Rengi | : Mat Elokstal |
| Kullanım Şekli | : Zemin |
| IP | : IP68 |

Product Chart | Ürün Tablosu

| Product Code | Power | CCT/K | Lumen | Dimension |
|-------------------------|-------|-------|-------|------------|
| SML725.015.W77.00.11.40 | 11W | 4000 | 4000 | 173-180mm |
| SML725.030.W77.00.20.40 | 20W | 4000 | 4000 | 323-180mm |
| SML725.060.W77.00.38.40 | 38W | 4000 | 4000 | 614-180mm |
| SML725.105.W77.00.64.40 | 64W | 4000 | 4000 | 1064-180mm |
| SML725.015.W77.00.11.65 | 11W | 6500 | 6500 | 173-180mm |
| SML725.030.W77.00.20.65 | 20W | 6500 | 6500 | 323-180mm |
| SML725.060.W77.00.38.65 | 38W | 6500 | 6500 | 614-180mm |
| SML725.105.W77.00.64.65 | 64W | 6500 | 6500 | 1064-180mm |



Options | Opsiyonlar

RGB
Amber, Blue and Green Color Options

RGB
Amber, Mavi ve Yeşil Renk Seçenekleri

Dimensions | Ölçüler

