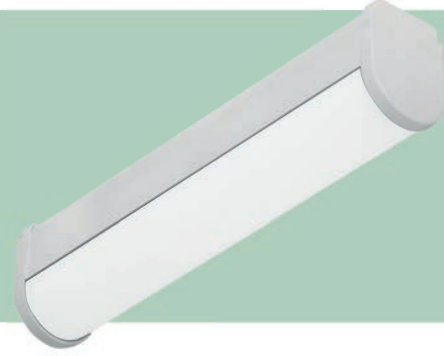


WATERPROOF
LUMINAIRE
ETANJ ARMATÜR



EGAN

Technical Specifications | Teknik Özellikler

| | |
|---------------|-----------------------|
| Body | : Aluminium |
| Diffuser | : Opal diffuser |
| Light Source | : Mid Power LED |
| CRI | : Ra > 80 |
| Input Voltage | : 220-240V AC 50/60Hz |
| Body Color | : Mat Grey |
| Usage | : Surface Mounted |
| IP | : IP65 |

| | |
|----------------|-----------------------|
| Gövde | : Alüminyum |
| Difüzör | : Opal difüzör |
| Işık Kaynağı | : Mid Power LED |
| CRI | : Ra > 80 |
| Giriş Gerilimi | : 220-240V AC 50/60Hz |
| Gövde Rengi | : Mat Elokstal |
| Kullanım Şekli | : Sıva Üstü |
| IP | : IP65 |

Product Chart | Ürün Tablosu

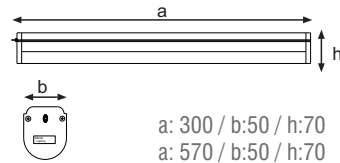
| Product Code | Power | CCT/K | Lumen |
|-------------------------|-------|-------|-------|
| SML350.030.U43.00.10.30 | 10W | 3000 | 1.090 |
| SML350.030.U43.00.10.40 | 10W | 4000 | 1.130 |
| SML350.030.U43.00.10.65 | 10W | 6500 | 1.130 |
| SML350.060.U43.00.15.30 | 15W | 3000 | 1.710 |
| SML350.060.U43.00.15.40 | 15W | 4000 | 1.785 |
| SML350.060.U43.00.15.65 | 15W | 6500 | 1.785 |
| SML350.090.U43.00.25.30 | 25W | 3000 | 2.850 |
| SML350.090.U43.00.25.40 | 25W | 4000 | 2.925 |
| SML350.090.U43.00.25.65 | 25W | 6500 | 2.925 |

Options | Opsiyonlar

DALI Compatible
Emergency Unit (1-3 Hour)

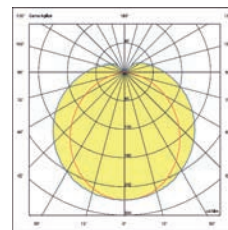
DALI Uyumlu
Acil Durum KİT'i (1-3 Saat)

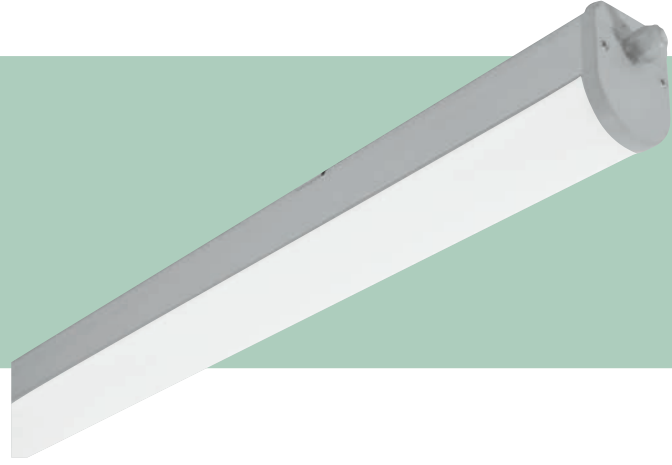
Dimensions | Ölçüler



a: 300 / b: 50 / h: 70
a: 570 / b: 50 / h: 70
a: 850 / b: 50 / h: 70

Photometric Data | Fotometrik Veri





EGAN-X

Technical Specifications | Teknik Özellikler

| | |
|---------------|-----------------------|
| Body | : Aluminium |
| Diffuser | : Opal diffuser |
| Light Source | : Mid Power LED |
| CRI | : Ra>80 |
| Input Voltage | : 220-240V AC 50/60Hz |
| Body Color | : Mat Grey |
| Usage | : Surface Mounted |
| IP | : IP65 |

| | |
|----------------|-----------------------|
| Gövde | : Alüminyum |
| Difüzör | : Opal difüzör |
| Işık Kaynağı | : Mid Power LED |
| CRI | : Ra>80 |
| Giriş Gerilimi | : 220-240V AC 50/60Hz |
| Gövde Rengi | : Mat Eloksal |
| Kullanım Şekli | : Sıva Üstü |
| IP | : IP65 |

Product Chart | Ürün Tablosu

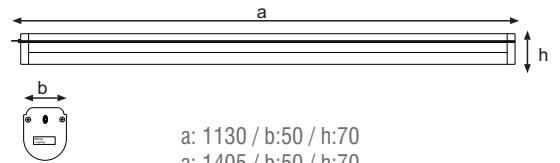
| Product Code | Power | CCT/K | Lumen |
|-------------------------|-------|-------|-------|
| SML350.120.U43.00.36.30 | 36W | 3000 | 3.780 |
| SML350.120.U43.00.36.40 | 36W | 4000 | 3.960 |
| SML350.120.U43.00.36.65 | 36W | 6500 | 3.960 |
| SML350.150.U43.00.50.30 | 50W | 3000 | 5.250 |
| SML350.150.U43.00.50.40 | 50W | 4000 | 5.500 |
| SML350.150.U43.00.50.65 | 50W | 6500 | 5.500 |

Options | Opsiyonlar

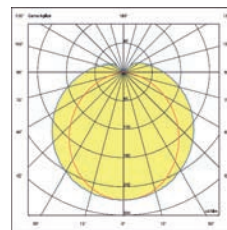
DALI Compatible
Emergency Unit (1-3 Hour)

DALI Uyumlu
Acil Durum KİT'i (1-3 Saat)

Dimensions | Ölçüler



Photometric Data | Fotometrik Veri





KIMBA

Technical Specifications | Teknik Özellikler

| | |
|---------------|-----------------------|
| Body | : Polycarbonate |
| Diffuser | : Polycarbonate |
| Light Source | : Mid Power LED |
| CRI | : Ra>80 |
| Input Voltage | : 220-240V AC 50/60Hz |
| Body Color | : Grey |
| Usage | : Surface Mounted |
| IP | : IP65 |

| | |
|----------------|-----------------------|
| Gövde | : Polikarbon |
| Difüzör | : Polikarbon |
| Işık Kaynağı | : Mid Power LED |
| CRI | : Ra>80 |
| Giriş Gerilimi | : 220-240V AC 50/60Hz |
| Gövde Rengi | : Gri |
| Kullanım Şekli | : Sıva Üstü |
| IP | : IP65 |

Product Chart | Ürün Tablosu

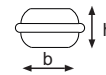
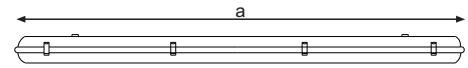
| Product Code | Power | CCT/K | LUMEN |
|-------------------------|-------|-------|-------|
| SML340.120.U43.00.30.30 | 40W | 3000 | 4.120 |
| SML340.120.U43.00.30.40 | 40W | 4000 | 4.240 |
| SML340.120.U43.00.30.65 | 40W | 6500 | 4.240 |

Options | Opsiyonlar

DALI Compatible
Emergency Unit (1-3 Hour)

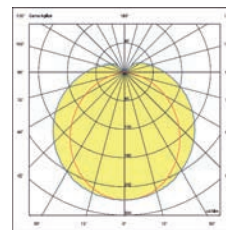
DALI Uyumlu
Acil Durum KİT'i (1-3 Saat)

Dimensions | Ölçüler



a: 1283mm / b:94mm / h: 95mm

Photometric Data | Fotometrik Veri





BLAZE

Technical Specifications | Teknik Özellikler

| | |
|---------------|-----------------------|
| Body | : Polycarbonate |
| Diffuser | : Polycarbonate |
| Light Source | : Mid Power LED |
| CRI | : Ra>80 |
| Input Voltage | : 220-240V AC 50/60Hz |
| Body Color | : Grey |
| Usage | : Surface Mounted |
| IP | : IP65 |

| | |
|----------------|-----------------------|
| Gövde | : Polikarbon |
| Difüzör | : Polikarbon |
| Işık Kaynağı | : Mid Power LED |
| CRI | : Ra>80 |
| Giriş Gerilimi | : 220-240V AC 50/60Hz |
| Gövde Rengi | : Gri |
| Kullanım Şekli | : Sıva Üstü |
| IP | : IP65 |

Product Chart | Ürün Tablosu

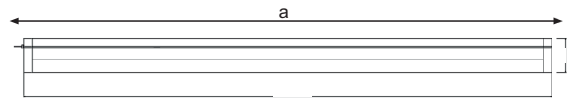
| Product Code | Power | CCT/K | Lumen |
|-------------------------|-------|-------|-------|
| SML330.060.U43.00.15.30 | 15W | 3000 | 1.710 |
| SML330.060.U43.00.15.40 | 15W | 4000 | 1.785 |
| SML330.060.U43.00.15.65 | 15W | 6500 | 1.785 |
| SML330.120.U43.00.36.30 | 36W | 3000 | 3.780 |
| SML330.120.U43.00.36.40 | 36W | 4000 | 3.960 |
| SML330.120.U43.00.36.65 | 36W | 6500 | 3.960 |
| SML330.150.U43.00.50.30 | 50W | 3000 | 5.250 |
| SML330.150.U43.00.50.40 | 50W | 4000 | 5.500 |
| SML330.150.U43.00.50.65 | 50W | 6500 | 5.500 |

Options | Opsiyonlar

DALI Compatible
Emergency Unit (1-3 Hour)

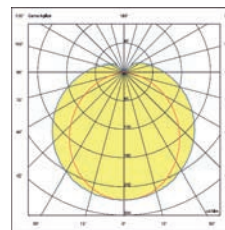
DALI Uyumlu
Acil Durum KİT'i (1-3 Saat)

Dimensions | Ölçüler



| | |
|---|-----------------------|
| h | a: 550 / b:50 / h:70 |
| b | a: 1100 / b:50 / h:70 |
| a | a: 1375 / b:50 / h:70 |

Photometric Data | Fotometrik Veri





TYSON-A

Technical Specifications | Teknik Özellikler

| | |
|--------------|-------------------|
| Body | : Aluminium |
| Glass | : Glass |
| Light Source | : E27 |
| Usage | : Surface Mounted |
| IP | : 65 |

| | |
|----------------|-------------|
| Gövde | : Alüminyum |
| Cam | : Cam |
| Işık Kaynağı | : E27 |
| Kullanım Şekli | : Sıva Üstü |
| IP | : 65 |

Product Chart | Ürün Tablosu

| Product Code | Power |
|--------------|-------|
| SMF310.127 | E27 |

TYSON-P

Technical Specifications | Teknik Özellikler

| | |
|--------------|-------------------|
| Body | : Plastic |
| Glass | : Plastic |
| Light Source | : E27 |
| Usage | : Surface Mounted |
| IP | : 40 |

| | |
|----------------|-------------|
| Gövde | : Plastik |
| Cam | : Plastik |
| LED | : E27 |
| Kullanım Şekli | : Sıva Üstü |
| IP | : 40 |

Product Chart | Ürün Tablosu

| Product Code | Power |
|--------------|-------|
| SMF315.127 | E27 |